



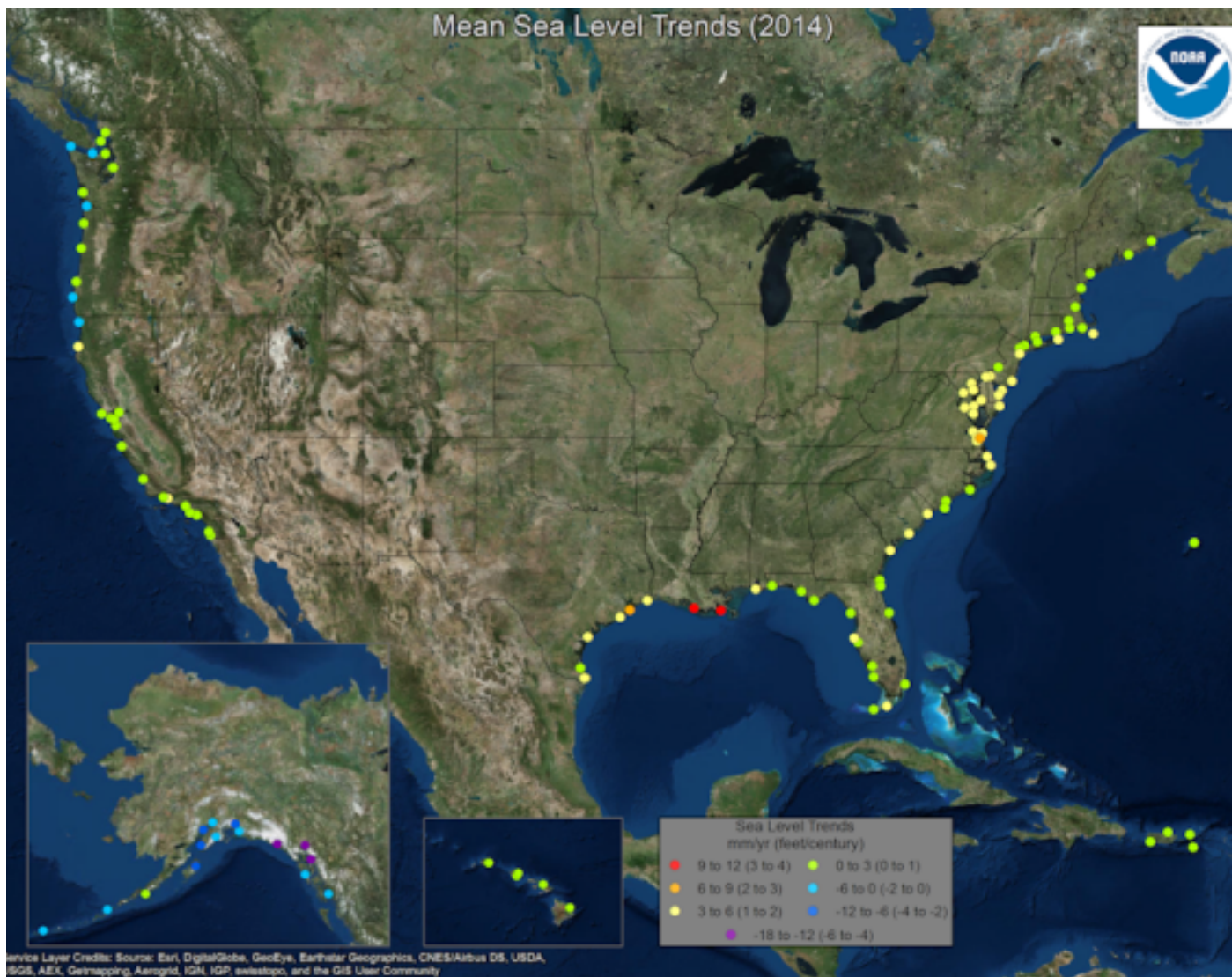
NAVFAC Mid-Atlantic

How Naval Facilities in Hampton Roads Are Coping With Rising Relative Sea Levels

Captain J. P. Rios, CEC, USN
Regional Engineer, Navy Region Mid-Atlantic
Commanding Officer, NAVFAC Mid-Atlantic

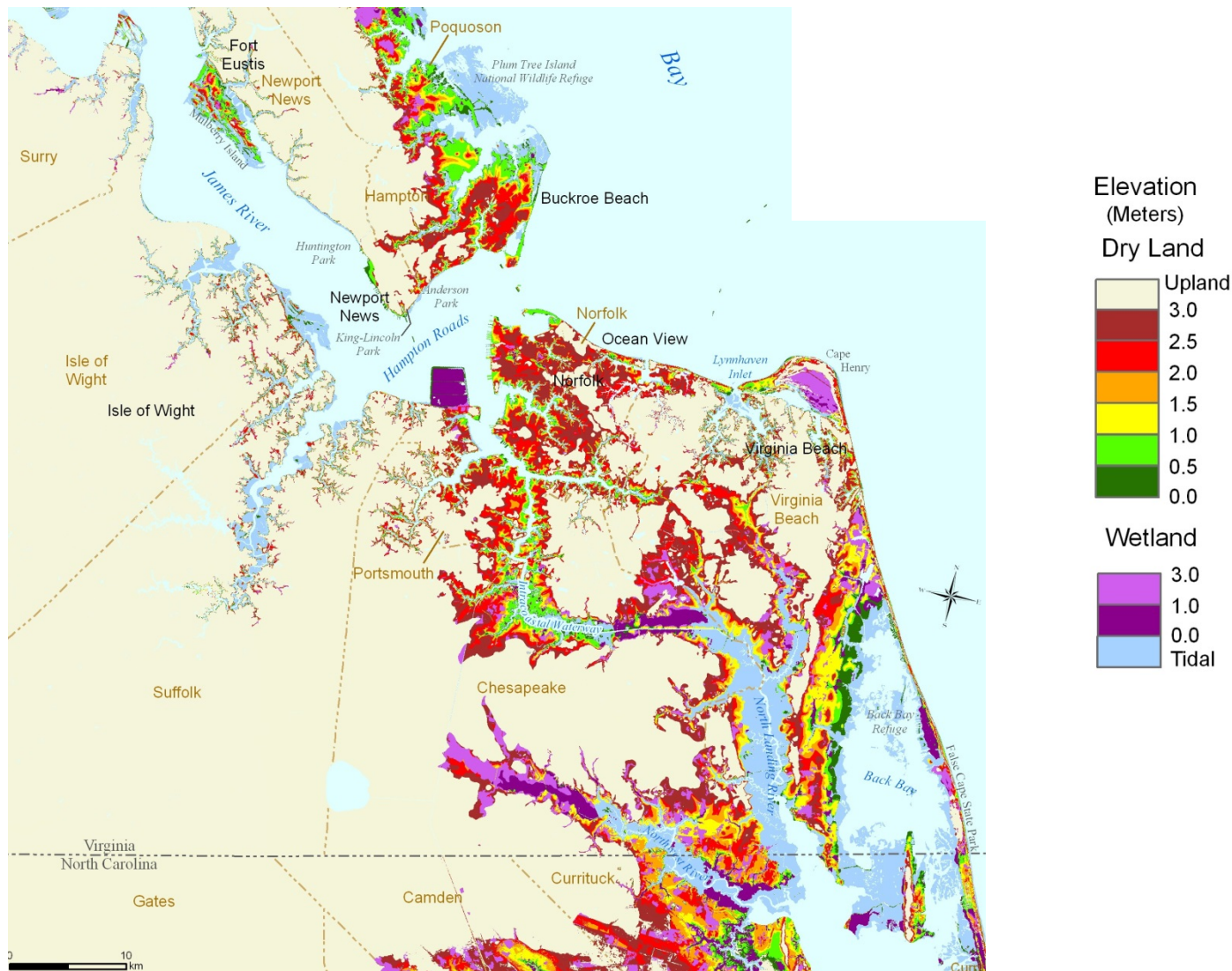


Sea Level Rise – US Coast Lines



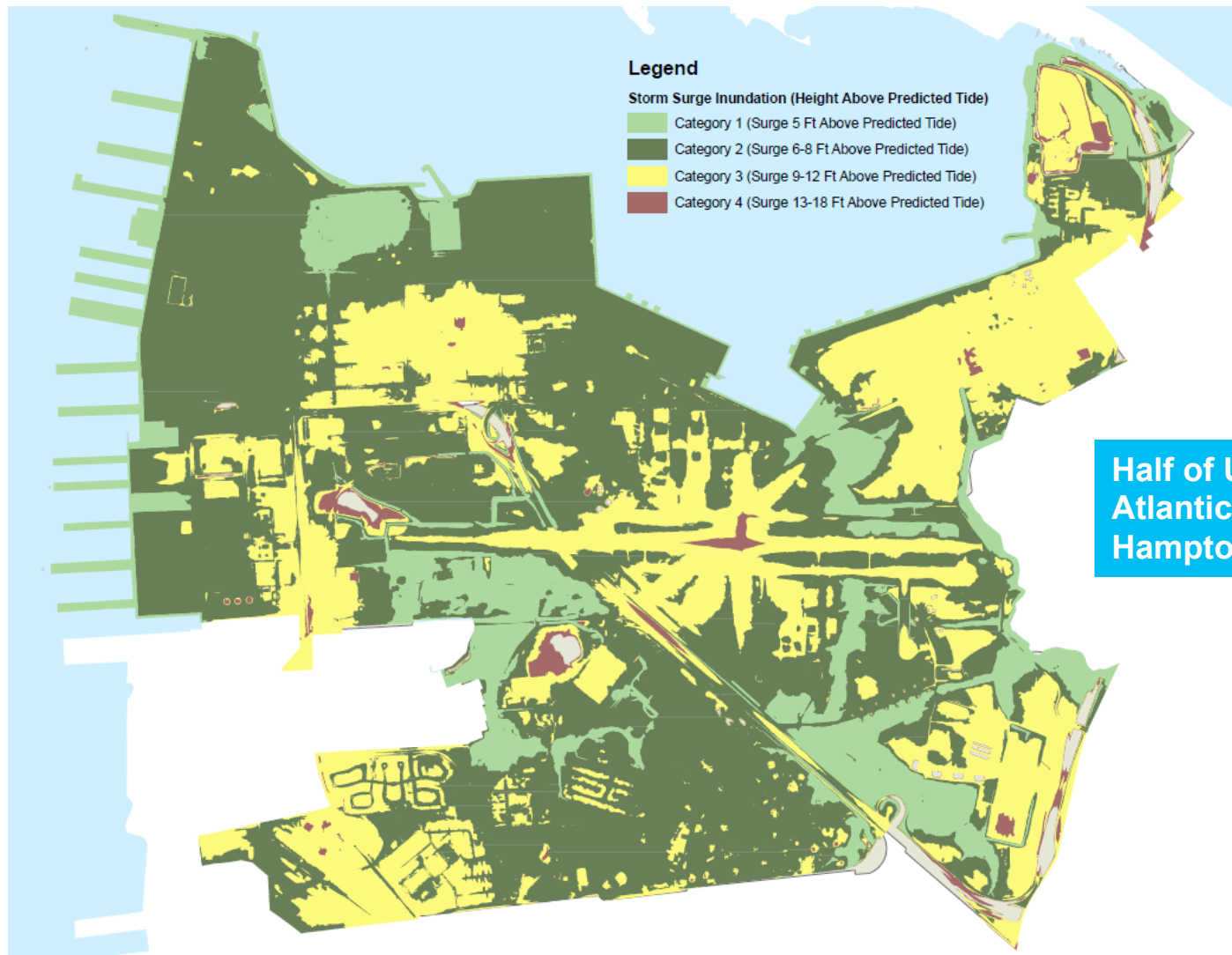


Hampton Roads Region Vulnerabilities





NS Norfolk Storm Surge



Half of US Navy
Atlantic Fleet in
Hampton Roads



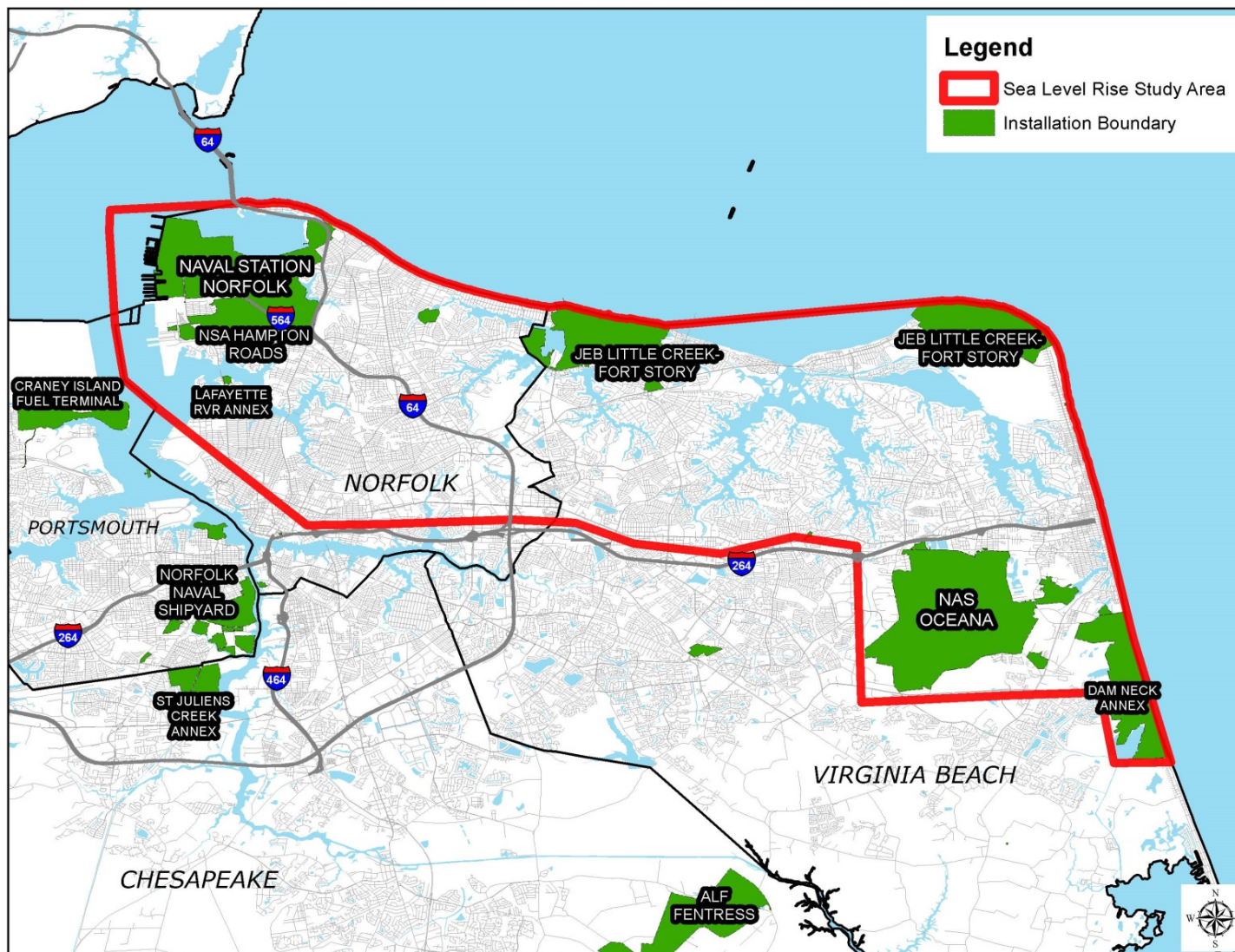
Key Drivers to defending the Navy against SLR



- **Developing understanding of SLR, its impacts, and solutions**
- **Working with U.S. Army Corps of Engineers, Virginia Institute of Marine Sciences, Municipalities, Universities, and Private sector on regional response/solution**
- **Incorporate SLR into Installation Development Plans, Region Shore Infrastructure Plans, & Global Shore Infrastructure Plan**
- **Incorporate SLR into Criteria, Project Requirements, and Project Design**
- **Navy Region Mid-Atlantic (RDML Ricky Williamson) nomination for an innovative Joint Land Use Study (JLUS) in Hampton Roads partnering with the Hampton Roads Planning District Commission, Norfolk, and Virginia Beach to address recurrent flooding & SLR**



Hampton Roads Sea Level Rise JLUS





JLUS General Timeframe



Approximate 18 – 24 Month Process

Initial JLUS
Meetings

Dec 2015

Develop
Scope of
Work/RFP

Winter
2015/16

Data
Gathering/
Analysis

Summer/Fall
2016

Developing
Action Plan/
Public Input

Spring 2017

Final
Report /
Community
Adoption

Fall 2017

